



STONECREST
at Norwood

232 STONECREST WAY
PITTSBORO, NC 27312
919-278-7655

stonecrestatnorwood.com

HOMESITE 6 FLOOR PLAN | PRICE: \$769,900



FEATURES

- *Open first floor with amazing views of the wooded back yard*
- *4 bedrooms*
- *4.5 baths*
- *First floor owner's suite and an additional bedroom*
- *Oversized screened porch with gas fireplace*
- *3 car side load garage*
- *1.69 acre homesite w/ private backyard*

This neo-colonial design really pops against its forested backdrop with a blend of distinctive front façade materials and unique roofline featuring flared truss tails. Nestled into a 1.69 acre, heavily-wooded homesite, this custom home provides open living and a flexible layout. The first-floor owner's suite and guest suite are joined by the gourmet kitchen, family, and dining rooms to provide the best of single-level living. Energy Star Certified and loaded with crown molding, the customization continues to the 2nd floor with two bedrooms, two baths and a massive recreation room for entertaining guests. This home will be ready for you to move in by March 2019.

Custom Built By: **HORIZON**
Custom Builders



STONECREST at Norwood

HEATED SQ FT: **3,972 SF**

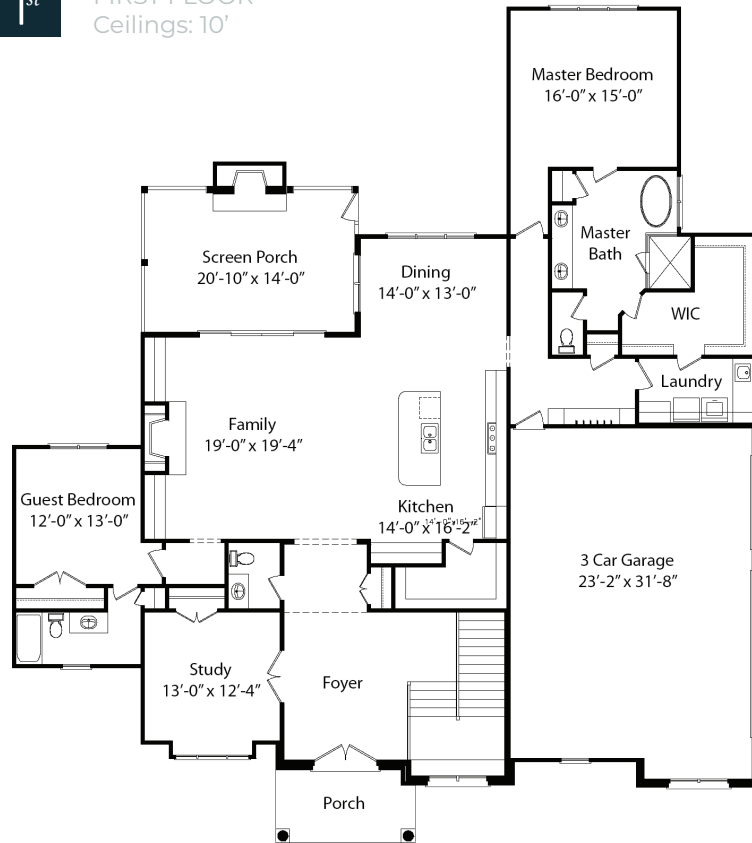
STORAGE: **934 SF**

GARAGE: **3 CAR**

ACRES: **1.69**

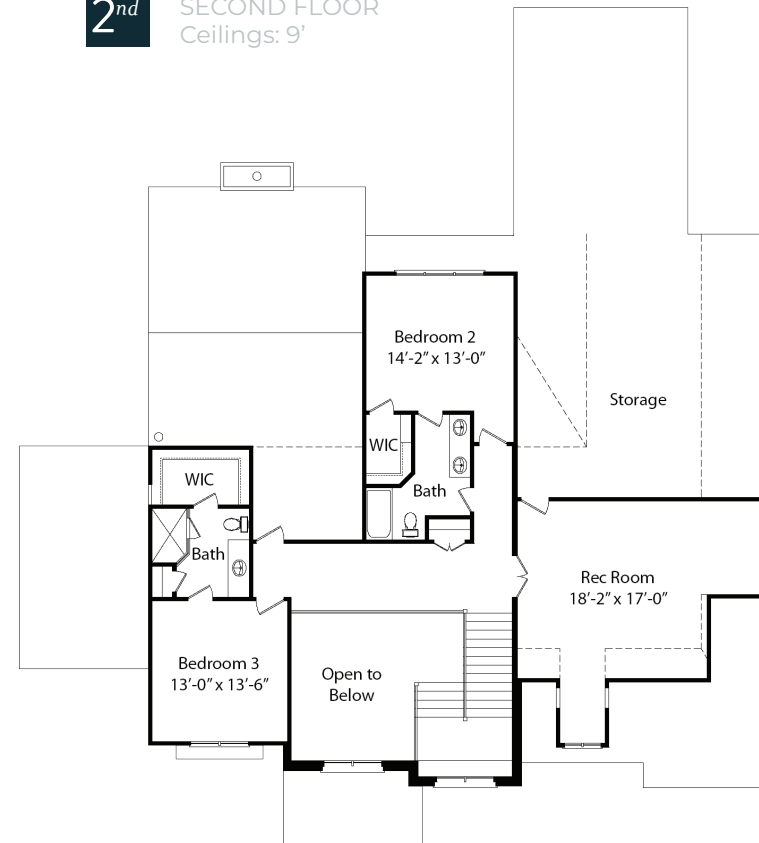
1st

FIRST FLOOR
Ceilings: 10'



2nd

SECOND FLOOR
Ceilings: 9'



PROUDLY DEVELOPED BY



SUN FOREST

SALES AND MARKETING BY



HOWARD PERRY
AND WALSTON
BUILDER SERVICES



EQUAL HOUSING
OPPORTUNITY

All details, dimensions, square footage and illustrations are approximate and may vary from actual plans and specifications.